

AD741 Series

FEATURES

Precision Input Characteristics

- Low V_{OS} : 0.5 mV max (L)
- Low V_{OS} Drift: 5 $\mu\text{V}/^\circ\text{C}$ max (L)
- Low I_b : 50 nA max (L)
- Low I_{OS} : 5 nA max (L)
- High CMRR: 90 dB min (K, L)

High Output Capability

- $A_{OL} = 25,000$ min, 1 k Ω Load (J, S) T_{MIN} to T_{MAX}
- $V_O = \pm 10$ V min, 1 k Ω Load (J, S)

Chips and MIL-STD-883B Parts Available

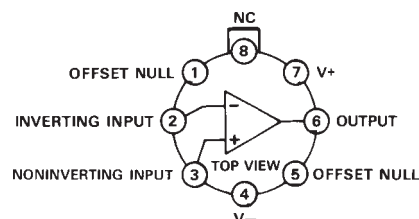
GENERAL DESCRIPTION

The Analog Devices AD741 Series are high performance monolithic operational amplifiers. All the devices feature full short circuit protection and internal compensation.

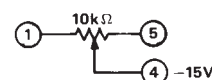
The Analog Devices AD741J, AD741K, AD741L, and AD741S are specially tested and selected versions of the standard AD741 operational amplifier. Improved processing and additional electrical testing guarantee the user precision performance at a very low cost. The AD741J, K and L substantially increase overall accuracy over the standard AD741C by providing maximum limits on offset voltage drift and significantly reducing the errors due to offset voltage, bias current, offset current, voltage gain, power supply rejection and common-mode rejection. For example, the AD741L features maximum offset voltage drift of 5 $\mu\text{V}/^\circ\text{C}$, offset voltage of 0.5 mV max, offset current of 5 nA max, bias current of 50 nA max and a CMRR of 90 dB min. The AD741S offers guaranteed performance over the extended temperature range of -55°C to $+125^\circ\text{C}$, with max offset voltage drift of 15 $\mu\text{V}/^\circ\text{C}$, max offset voltage of 4 mV, max offset current of 25 nA, and a minimum CMRR of 80 dB.

CONNECTION DIAGRAMS

TO-99 (H) Package

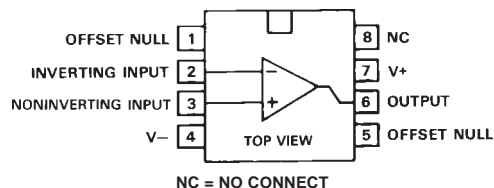


NOTE: PIN 4 CONNECTED TO CASE



NC = NO CONNECT

Mini-DIP (N) Package



NC = NO CONNECT

HIGH OUTPUT CAPABILITY

Both the AD741J and AD741S offer the user the additional advantages of high guaranteed output current and gain at low values of load impedance. The AD741J guarantees a minimum gain of 25,000 swinging ± 10 V into a 1 k Ω load from 0°C to $+70^\circ\text{C}$. The AD741S guarantees a minimum gain of 25,000 swinging ± 10 V into a 1 k Ω load from -55°C to $+125^\circ\text{C}$.

All devices feature full short circuit protection, high gain, high common-mode range and internal compensation. The AD741J, K and L are specified for operation from 0°C to $+70^\circ\text{C}$ and are available in both the TO-99 and mini-DIP packages. The AD741S is specified for operation from -55°C to $+125^\circ\text{C}$, and is available in the TO-99 package.

REV. A

Information furnished by Analog Devices is believed to be accurate and reliable. However, no responsibility is assumed by Analog Devices for its use, nor for any infringements of patents or other rights of third parties which may result from its use. No license is granted by implication or otherwise under any patent or patent rights of Analog Devices.

AD741 Series—SPECIFICATIONS (typical @ +25°C and ±15 V dc, unless otherwise noted)

Model	AD741C			AD741			AD741J			Units
	Min	Typ	Max	Min	Typ	Max	Min	Typ	Max	
OPEN-LOOP GAIN R _L = 1 kΩ, V _O = ±10 V R _L = 2 kΩ, V _O = ±10 V T _A = min to max R _L = 2 kΩ										V/V V/V V/V
	20,000	200,000		50,000	200,000		50,000	200,000		
	15,000			25,000			25,000			
OUTPUT CHARACTERISTICS Voltage @ R _L = 1 kΩ, T _A = min to max Voltage @ R _L = 2 kΩ, T _A = min to max Short Circuit Current										V V mA
	±10	±13		±10	±13		±10	±13		
		25			25			25		
FREQUENCY RESPONSE Unity Gain, Small Signal Full Power Response Slew Rate Transient Response (Unity Gain) Rise Time C _L ≤ 10 V p-p Overshoot										MHz kHz V/μs μs %
		1			1			1		
		10			10			10		
		0.5			0.5			0.5		
		0.3			0.3			0.3		
		5.0			5.0			5.0		
INPUT OFFSET VOLTAGE Initial, R _S ≤ 10 kΩ, Adjust to Zero T _A = min to max Average vs. Temperature (Untrimmed) vs. Supply, T _A = min to max										mV mV μV/°C μV/V
		1.0	6.0		1.0	5.0		1.0	3.0	
		1.0	7.5		1.0	6.0			4.0	
									20	
								30	100	
INPUT OFFSET CURRENT Initial T _A = min to max Average vs. Temperature										nA nA nA/°C
		20	200		20	200		5	50	
		40	300		85	500			100	
								0.1		
INPUT BIAS CURRENT Initial T _A = min to max Average vs. Temperature										nA nA nA/°C
		80	500		80	500		40	200	
		120	800		300	1,500			400	
								0.6		
INPUT IMPEDANCE DIFFERENTIAL	0.3	2.0		0.3	2.0			1.0		MΩ
INPUT VOLTAGE RANGE ¹ Differential, max Safe Common-Mode, max Safe Common-Mode Rejection, R _S = ≤ 10 kΩ, T _A = min to max, V _{IN} = ±12 V										V V dB
	±12	±13		±12	±13			±15	±30	
	70	90		70	90		80	90		
POWER SUPPLY Rated Performance Operating Power Supply Rejection Ratio Quiescent Current Power Consumption T _A = min T _A = max										V V μV/V mA mW mW
		±15			±15			±15		
							±5		±18	
		30	150		30	150				
		1.7	2.8		1.7	2.8		2.2	3.3	
		50	85		50	85		50	85	
					60	100				
					45	75				
TEMPERATURE RANGE Operating Rated Performance Storage										°C °C
	0		+70	−55		+125	0		+70	
	−65		+150	−65		+150	−65		+150	

NOTES

¹For supply voltages less than ±15 V, the absolute maximum input voltage is equal to the supply voltage.

All min and max specifications are guaranteed. Specifications shown in **boldface** are tested on all production units at final electrical test. Results from those tests are used to calculate outgoing quality levels.

Specifications subject to change without notice.

AD741 Series

Model	AD741K			AD741L			AD741S			Units
	Min	Typ	Max	Min	Typ	Max	Min	Typ	Max	
OPEN-LOOP GAIN										
$R_L = 1\text{ k}\Omega$, $V_O = \pm 10\text{ V}$							50,000	200,000		V/V
$R_L = 2\text{ k}\Omega$, $V_O = \pm 10\text{ V}$	50,000	200,000		50,000	200,000					V/V
$T_A = \text{min to max}$, $R_L = 2\text{ k}\Omega$	25,000			25,000			25,000			V/V
OUTPUT CHARACTERISTICS										
Voltage @ $R_L = 1\text{ k}\Omega$, $T_A = \text{min to max}$	± 10	± 13		± 10	± 13		± 10	± 13		V
Voltage @ $R_L = 2\text{ k}\Omega$, $T_A = \text{min to max}$		25			25			25		V
Short Circuit Current										mA
FREQUENCY RESPONSE										
Unity Gain, Small Signal		1			1			1		MHz
Full Power Response		10			10			10		kHz
Slew Rate		0.5			0.5			0.5		V/ μ s
Transient Response (Unity Gain)										
Rise Time		0.3			0.3			0.3		μ s
Overshoot		5.0			5.0			5.0		%
INPUT OFFSET VOLTAGE										
Initial, $R_S \leq 10\text{ k}\Omega$, Adjust to Zero		0.5	2.0		0.2	0.5		1.0	2	mV
$T_A = \text{min to max}$			3.0			1.0			4	mV
Average vs. Temperature (Untrimmed)		6.0	15.0		2.0	5.0		6.0	15	μ V/ $^{\circ}$ C
vs. Supply, $T_A = \text{min to max}$		5	15.0		5	15.0		30	100	μ V/V
INPUT OFFSET CURRENT										
Initial		2	10		2	5		2	10	nA
$T_A = \text{min to max}$			15			10			25	nA
Average vs. Temperature		0.02	0.02		0.02	0.1		0.1	0.25	nA/ $^{\circ}$ C
INPUT BIAS CURRENT										
Initial		30	75		30	50		30	75	nA
$T_A = \text{min to max}$			120			100			250	nA
Average vs. Temperature		0.6	1.5		0.6	1.0		0.6	2.0	nA/ $^{\circ}$ C
INPUT IMPEDANCE DIFFERENTIAL		2.0			2.0			2.0		M Ω
INPUT VOLTAGE RANGE ¹										
Differential, max Safe		± 30			± 30			± 30		V
Common-Mode, max Safe		± 15			± 15			± 15		V
Common-Mode Rejection, $R_S = \leq 10\text{ k}\Omega$, $T_A = \text{min to max}$, $V_{IN} = \pm 12\text{ V}$	90	100		90	100		90	100		dB
POWER SUPPLY										
Rated Performance		± 15			± 15			± 15		V
Operating	± 5		± 22	± 5		± 22	± 5		± 22	V
Power Supply Rejection Ratio		20			20			20		μ V/V
Quiescent Current		1.7	2.8		1.7	2.8		2.0	2.8	mA
Power Consumption		50	85		50	85		50	85	mW
$T_A = \text{min}$								60	100	mW
$T_A = \text{max}$								75	115	mW
TEMPERATURE RANGE										
Operating Rated Performance	0		+70	0		+70	-55		+125	$^{\circ}$ C
Storage	-65		+150	-65		+150	-65		+150	$^{\circ}$ C

AD741 Series

ABSOLUTE MAXIMUM RATINGS

Absolute Maximum Ratings	AD741, J, K, L, S	AD741C
Supply Voltage	± 22 V	± 18 V
Internal Power Dissipation	500 mW ¹	500 mW
Differential Input Voltage	± 30 V	± 30 V
Input Voltage	± 15 V	± 15 V
Storage Temperature Range	-65°C to $+150^{\circ}\text{C}$	-65°C to $+150^{\circ}\text{C}$
Lead Temperature (Soldering, 60 sec)	$+300^{\circ}\text{C}$	$+300^{\circ}\text{C}$
Output Short Circuit Duration	Indefinite ²	Indefinite

NOTES

¹Rating applies for case temperature to $+125^{\circ}\text{C}$. Derate TO-99 linearity at $6.5 \text{ mW}/^{\circ}\text{C}$ for ambient temperatures above $+70^{\circ}\text{C}$.

²Rating applies for shorts to ground or either supply at case temperatures to $+125^{\circ}\text{C}$ or ambient temperatures to $+75^{\circ}\text{C}$.

ORDERING GUIDE

Model ¹	Temperature Range	Initial Off Set Voltage	Package Description	Package Option
AD741CN	0°C to $+70^{\circ}\text{C}$	6.0 mV	Mini-DIP	(N-8)
AD741CH	0°C to $+70^{\circ}\text{C}$	6.0 mV	TO-99	(H-08A)
AD741JN	0°C to $+70^{\circ}\text{C}$	3.0 mV	Mini-DIP	(N-8)
AD741JH	0°C to $+70^{\circ}\text{C}$	3.0 mV	TO-99	(H-08A)
AD741KN	0°C to $+70^{\circ}\text{C}$	2.0 mV	Mini-DIP	(N-8)
AD741KH	0°C to $+70^{\circ}\text{C}$	2.0 mV	TO-99	(H-08A)
AD741LN	0°C to $+70^{\circ}\text{C}$	0.5 mV	Mini-DIP	(N-8)
AD741LH	0°C to $+70^{\circ}\text{C}$	0.5 mV	TO-99	(H-08A)
AD741H	-55°C to $+125^{\circ}\text{C}$	5.0 mV	TO-99	(H-08A)
AD741SH	-55°C to $+125^{\circ}\text{C}$	2.0 mV	TO-99	(H-08A)

NOTE

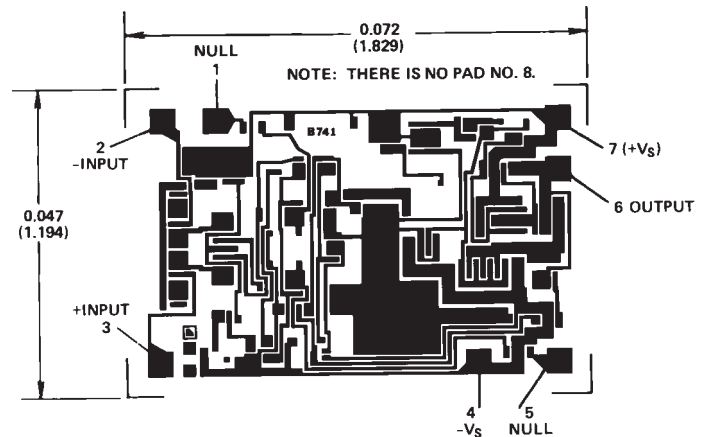
¹J, K and S grade chips also available.

METALIZATION PHOTOGRAPH

All versions of the AD741 are available in chip form.

Contact factory for latest dimensions.

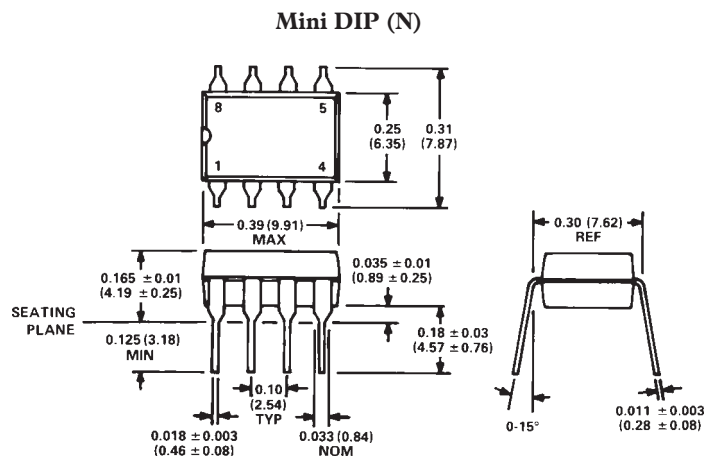
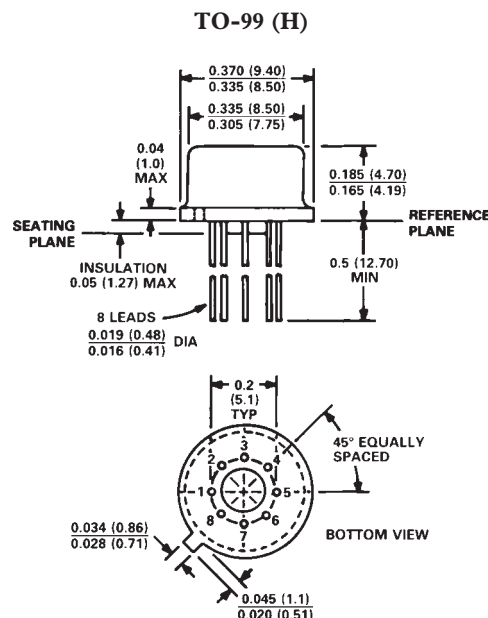
Dimensions shown in inches and (mm).



PAD NUMBERS CORRESPOND TO PIN NUMBERS FOR THE TO-99 8-PIN METAL PACKAGE.

OUTLINE DIMENSIONS

Dimensions shown in inches and (mm).



AD741 Series—Typical Performance Curves

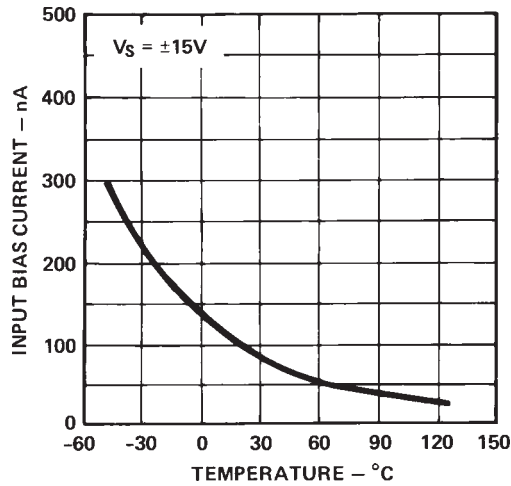


Figure 1. Input Bias Current vs. Temperature

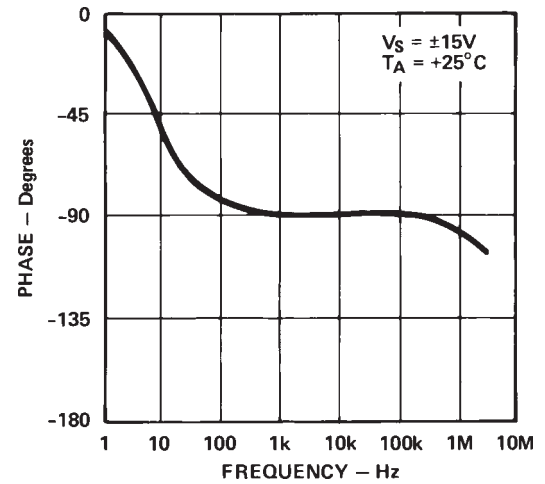


Figure 4. Open-Loop Phase Response vs. Frequency

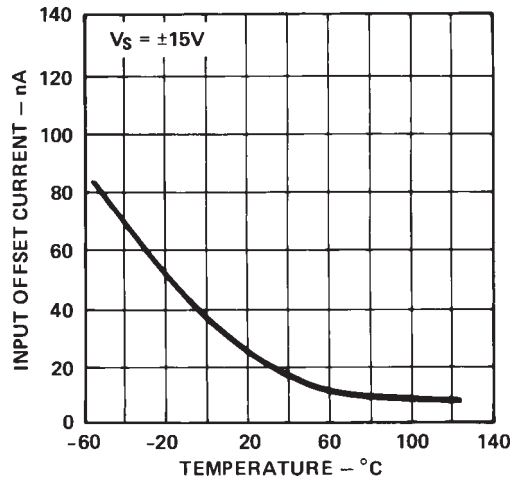


Figure 2. Input Offset Current vs. Temperature

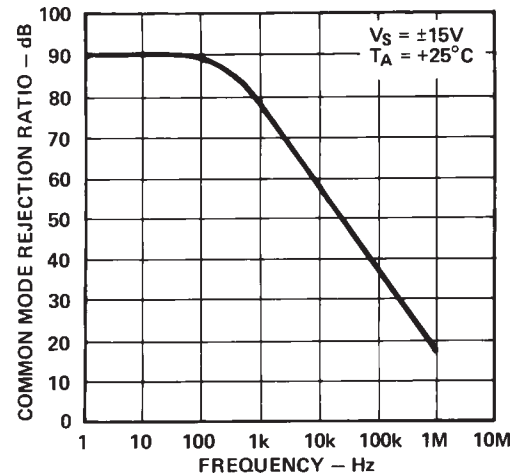


Figure 5. Common-Mode Rejection vs. Frequency

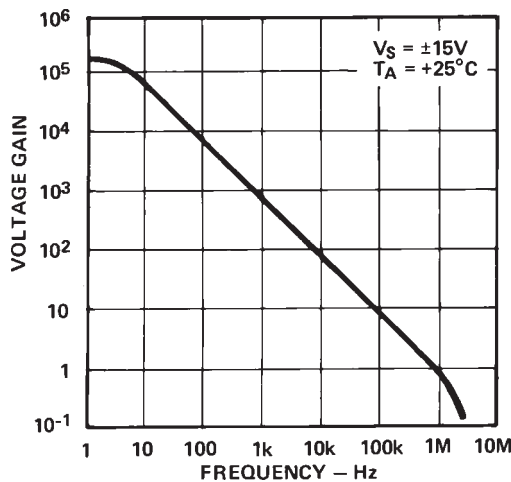


Figure 3. Open-Loop Gain vs. Frequency

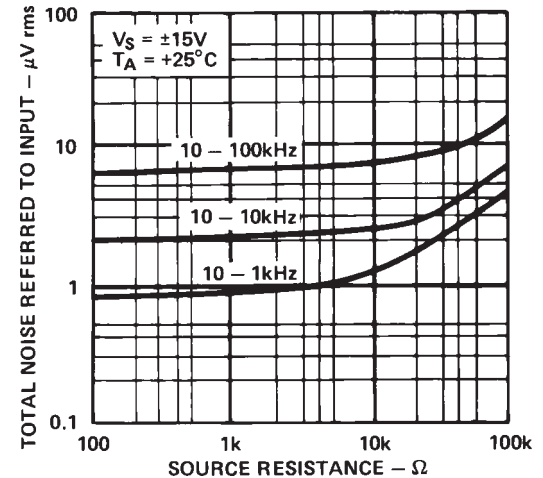


Figure 6. Broad Band Noise vs. Source Resistance

AD741 Series

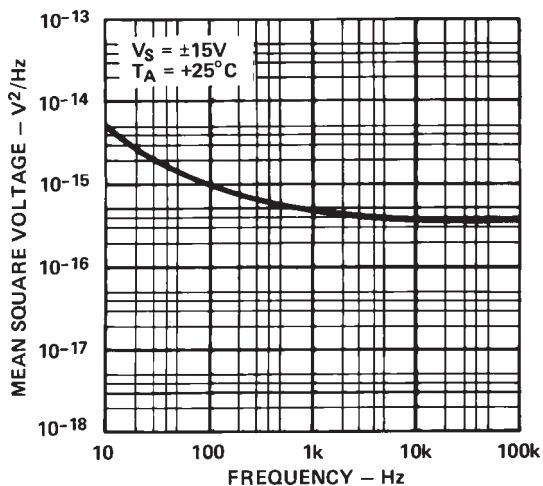


Figure 7. Input Noise Voltage vs. Frequency

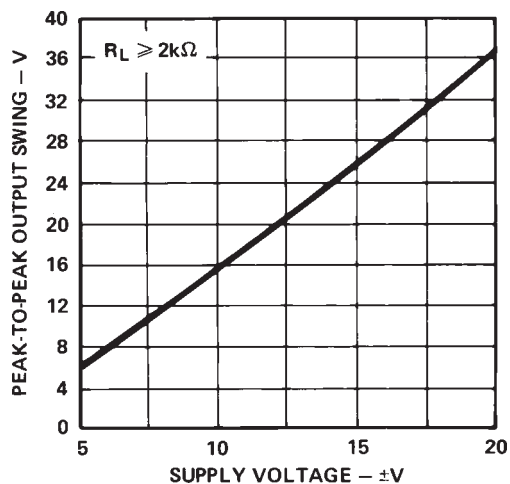


Figure 10. Output Voltage Swing vs. Supply Voltage

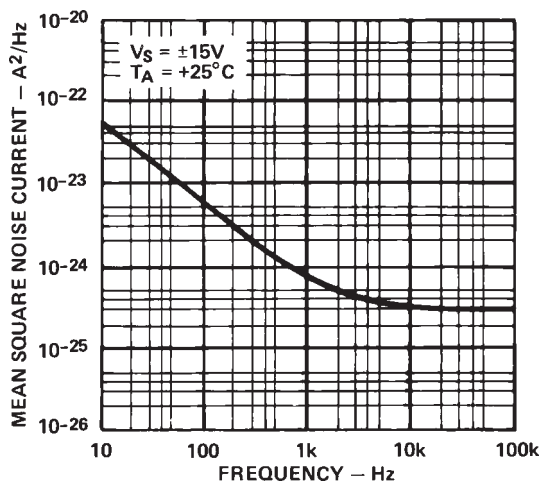


Figure 8. Input Noise Current vs. Frequency

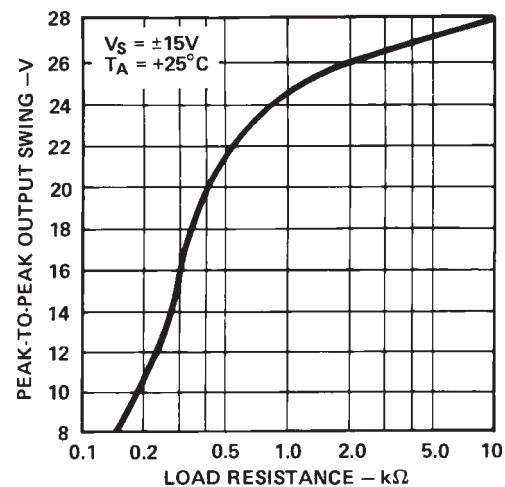


Figure 11. Output Voltage Swing vs. Load Resistance

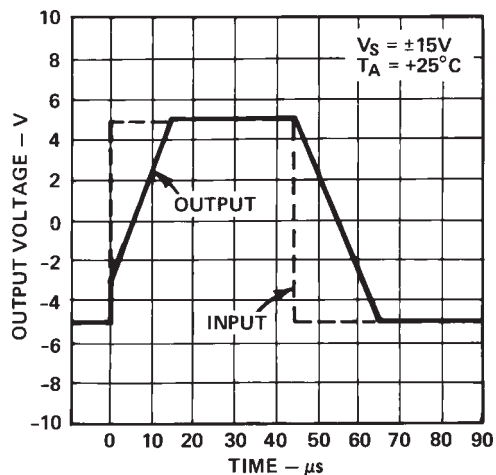


Figure 9. Voltage Follower Large Signal Pulse Response

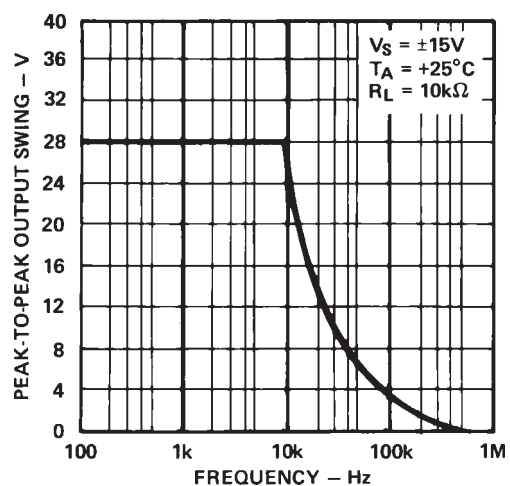


Figure 12. Output Voltage Swing vs. Frequency

This datasheet has been download from:

www.datasheetcatalog.com

Datasheets for electronics components.